

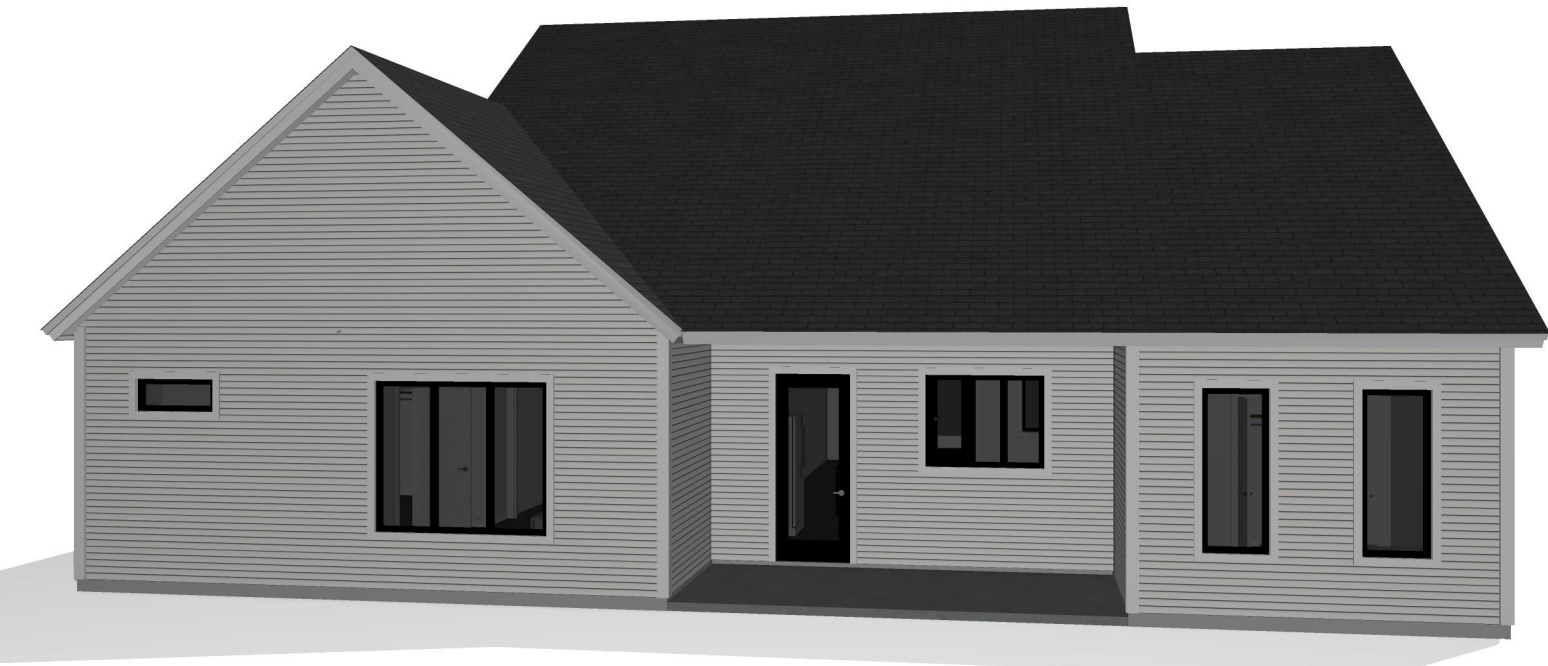
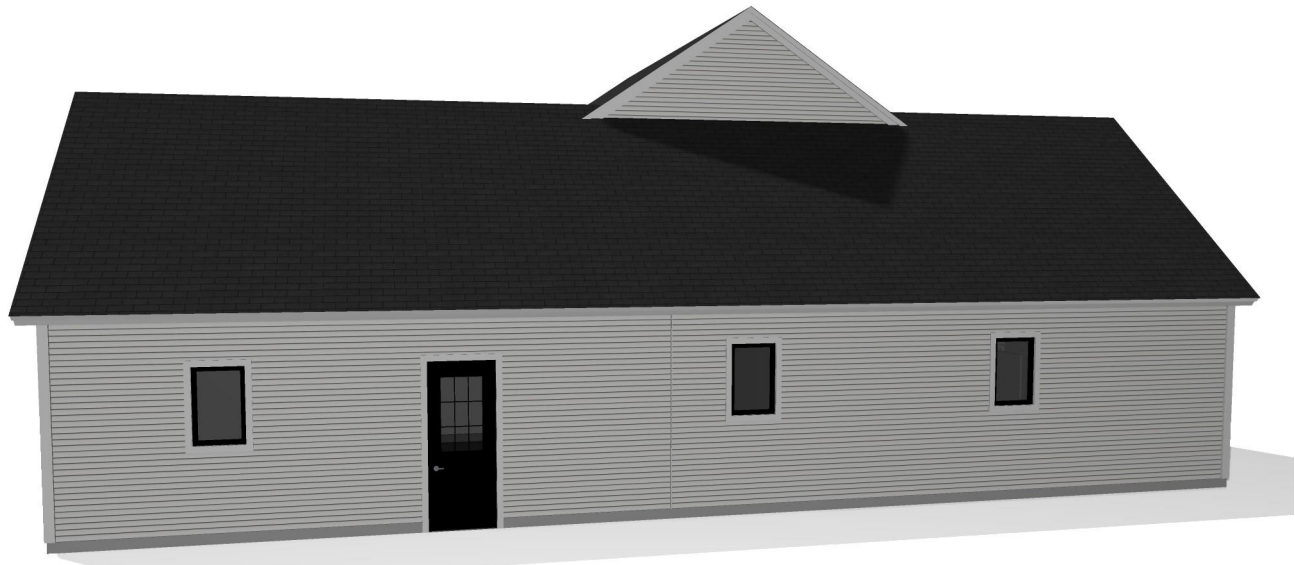
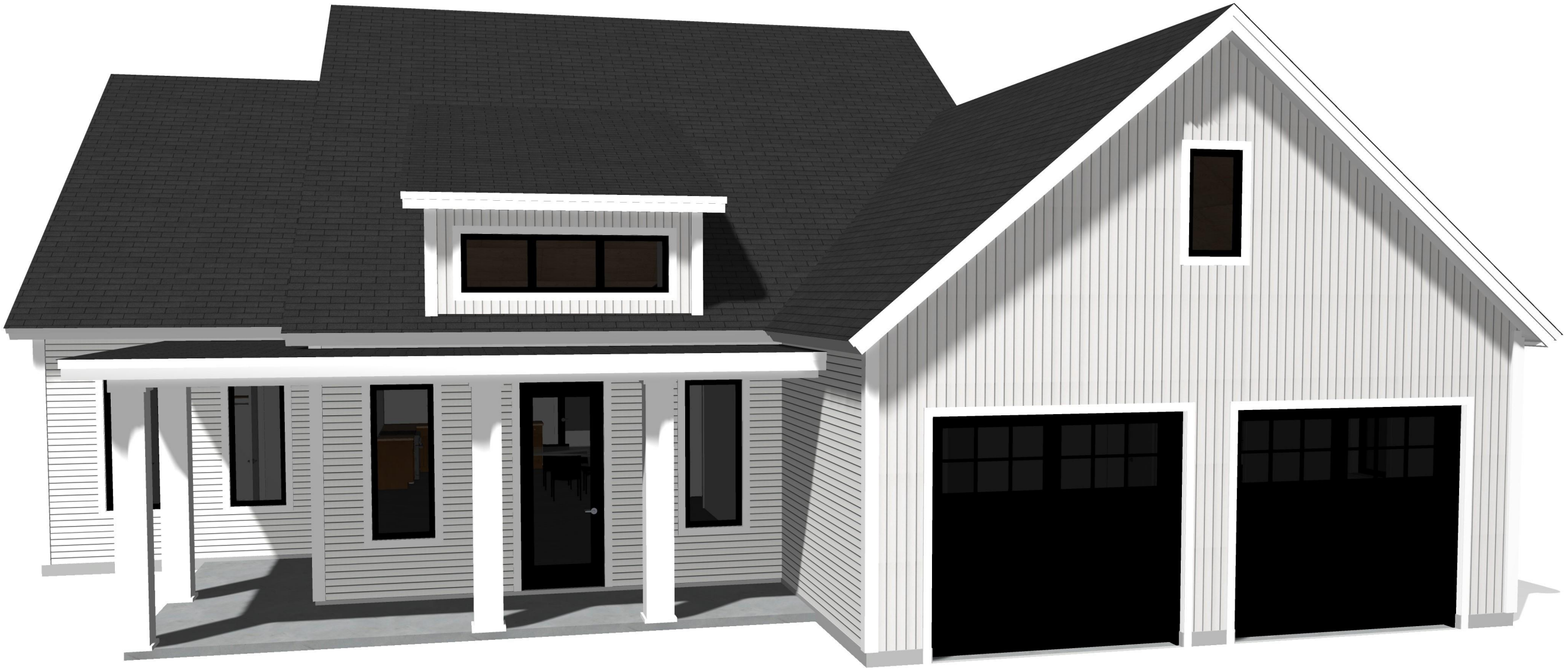
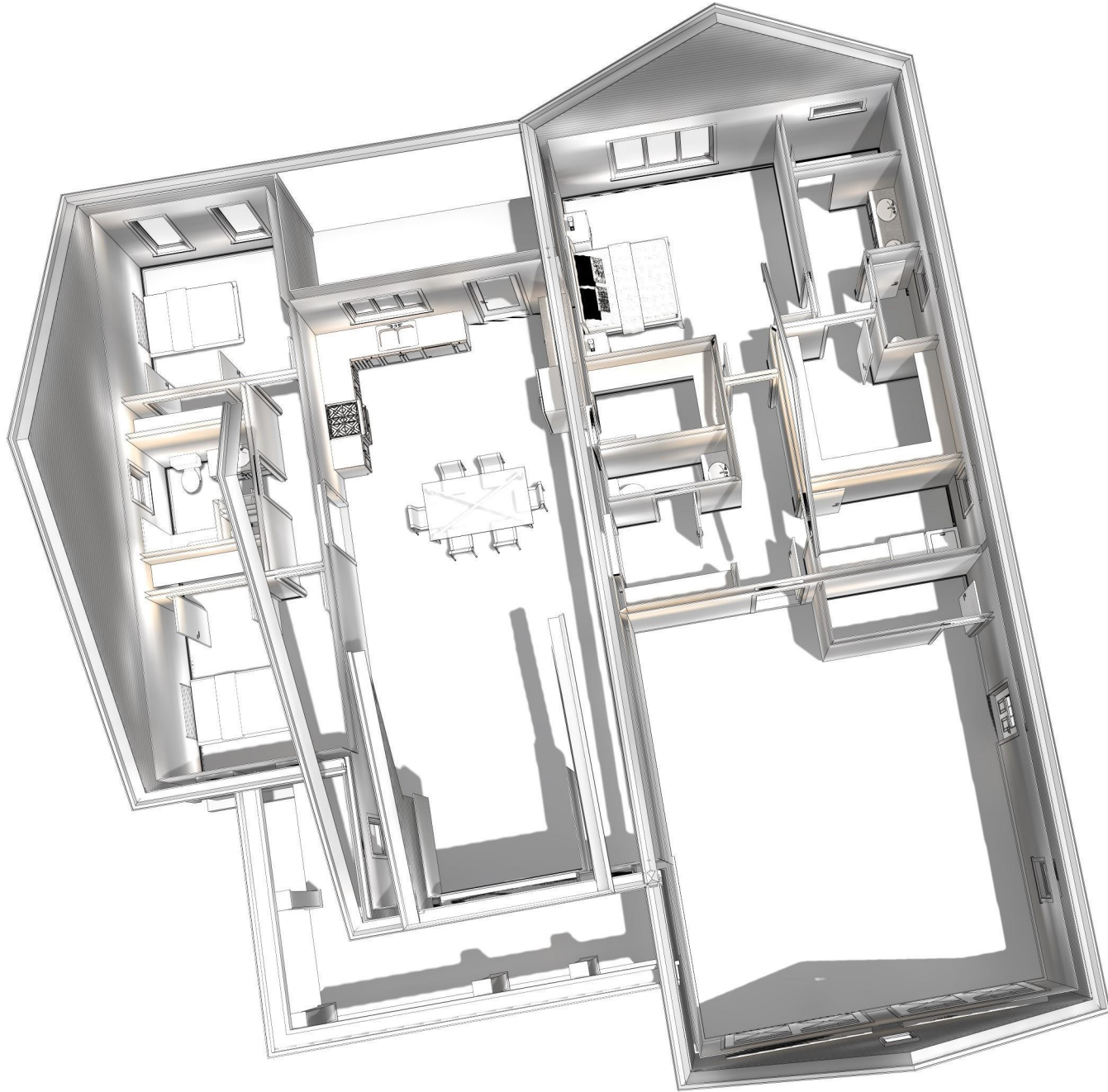
D2. This drawing has been created from information gathered from client and/or builder and others involved. Any decisions to sway from this agreed upon drawing could create undesired consequences. Wall heights, floor and roof systems shown here are deliberate choices made by the designer and agreed upon by the person in possession of this copy. Riser counts, fascia heights and window sizes are determined based on these components. Changing wall heights or floor depth (conventional lumber vs. open web floor trusses or joists) will likely change the number of stairs and total run needed, affecting the overall design. Changing the roof framing approach (conventional lumber vs. truss) could affect the fascia heights and the overall look of the home as viewed from the exterior. Changing fascia heights may also affect window sizing, placement, and egress designation wherever they near rooflines. If the homeowner, builder and/or salesperson make the decision to deviate from the design as shown by changing any of these components, it is strongly recommended that they contact this design group to verify that the drawing will still work.

DRAWING SCHEDULE

TITLE PAGE	1
FRONT & RIGHT ELEVATIONS	2
REAR & LEFT ELEVATIONS	3
FLOOR PLANS	4
FOUNDATION	5
ROOF	6

AREA SCHEDULE

NAME	AREA
Footprint (used for estimating)	2620 sq ft.
1st Floor - finished	3910 sq ft.
Garage	603 sq ft.



“ATTENTION HOMEOWNERS, BUILDERS, DESIGNERS & ARCHITECTS”

ALL WORK SHALL CONFORM TO STATE AND LOCAL BUILDING CODES

THE BUILDING CODE IS THE MINIMUM REQUIREMENT, ALWAYS CONSULT WITH THE LOCAL AUTHORITIES FOR AMENDMENTS OR IMPROVEMENTS TO THE CODE

ALL DIMENSIONS ARE TO BE VERIFIED IN THE FIELD

ALL FOOTINGS ARE TO REST ON UNDISTURBED SOIL AND EXTEND BELOW THE FROST LINE

ALL LUMBER EXPOSED TO THE WEATHER OR IN DIRECT CONTACT WITH CONCRETE MUST BE PRESSURE TREATED

SMOKE ALARMS ARE TO BE HARDWIRED, INTERCONNECTED AND INSTALLED IN THE FOLLOWING LOCATIONS:
-EACH SLEEPING AREA
-OUTSIDE EACH SEPERATE SLEEPING AREA IN THE VICINITY OF THE BEDROOMS
-ON EACH ADDITIONAL STORY INCLUDING BASEMENT AND HABITABLE ATTICS
-NOT LESS THAN 3' HORIZONTALLY FROM A BATHROOM DOOR CONTAINING A SHOWER OR A BATHTUB

A GARAGE CEILING WITH HABITABLE SPACE ABOVE MUST BE PROTECTED WITH 5/8" TYPE X GYPSUM

COMMON WALL BETWEEN HOUSE AND GARAGE MUST HAVE NO LESS THAN 1/2" GYPSUM ON THE GARAGE SIDE

OPENINGS BETWEEN THE RESIDENCE AND GARAGE SHALL BE PROTECTED WITH A 20 MIN. FIRE RATE DOOR EQUIPPED WITH A SELF-CLOSING DEVICE.

GARAGE SLAB MUST BE AN APPROVED NON-COMBUSTIBLE MATERIAL AND BE SLOPED TO FACILITATE THE MOVEMENT OF LIQUIDS TO A FLOOR DRAIN OR THE MAIN VEHICLE ENTRY DOOR

MAX SILL HEIGHT FOR EGRESS WINDOWS IS 44"

FOR EGRESS, TEMPERED GLASS, GLASS LIMITER OR WOOD (WINDOW OPENING CONTROL DEVICE) PLEASE REFER TO 2015 IRC

REFER TO IRC TABLE R602.3(1) FOR FASTENING SCHEDULE

REFER TO IRC R602.7(2) FOR INTERIOR GIRDER SPANS

WINDOW SCHEDULE

LIBRARY NAME	PRODUCT CODE	COUNT	EGRESS
SP\MARVIN\ELEVATE\CASEMENT\1 WIDE UNIT	ELCA2943 E	4	YES
SP\MARVIN\ELEVATE\AWNING\3 WIDE UNITS	ELAWN3321 3W	1	NO
SP\MARVIN\ELEVATE\CASEMENT\1 WIDE UNIT	ELCA2911 E	1	YES
SP\MARVIN\ELEVATE\CASEMENT\3 WIDE UNITS	ELCA2141 3W	1	NO
SP\MARVIN\ELEVATE\CASEMENT\3 WIDE UNITS	ELCA2911 3W E	1	YES
SP\MARVIN\ELEVATE\CASEMENT\PICTURE	ELCAP2543	1	NO
SP\MARVIN\ELEVATE\CASEMENT\TRANSOM	ELCATR4116	1	NO

DOOR SCHEDULE

LIBRARY NAME	PRODUCT CODE	COUNT	EGRESS
SP\DOORS\EXTERIOR\HINGED\3 LITE	3080R	1	YES
SP\DOORS\EXTERIOR\HINGED\GLASS	3080 L	2	YES
SP\DOORS\EXTERIOR\GARAGE	9080 STABLE	2	YES
SP\DOORS\INTERIOR\HINGED	2810 L	4	NO
SP\DOORS\INTERIOR\HINGED	1668 R	1	NO
SP\DOORS\INTERIOR\HINGED	2810 R	1	NO
SP\DOORS\INTERIOR\HINGED	2610 R	2	NO
SP\DOORS\INTERIOR\HINGED	2668 SHOWER	1	NO
SP\DOORS\INTERIOR\HINGED	5010 LR	2	NO
SP\DOORS\INTERIOR\HINGED	3068 R FR	1	NO
SP\DOORS\INTERIOR\HINGED	2610 L	4	NO

PRELIMINARY DRAWING - NOT FOR CONSTRUCTION

OLEG OPALNYK

SPEC HOUSE 3

10/4/2024

RANCH

BRUNSWICK

SCALE = AS NOTED

Hammond
Lumber Company

22 LOCATIONS ACROSS MAINE & NEW HAMPSHIRE

AUBURN • BANGOR • BAR HARBOR • BELFAST • BELGRADE
BLUE HILL • BOOTHBAY HARBOR • BRUNSWICK • BUCKSPORT
CALAIS • CAMDEN • CHERRYFIELD • DAMARISCOTTA • ELLSVORTH
FAIRFIELD • FARMINGTON • GREENVILLE • MACHIAS • PORTLAND
ROCHESTER (NH) • ROCKLAND • SKOWHEGAN

WWW.HAMMONDLUMBER.COM

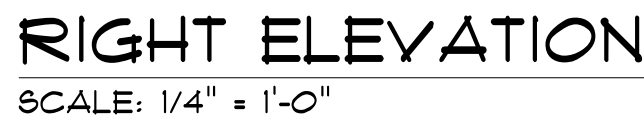
D1. DRAWINGS ARE PROVIDED BY HAMMOND LUMBER COMPANY AS A SERVICE TO IT'S CUSTOMERS AND ARE INTENDED FOR INFORMATIONAL AND ILLUSTRATIVE PURPOSES ONLY. THE INFORMATION PRESENTED IN THESE DRAWINGS WAS NOT OR REVIEWED BY A REGISTERED ARCHITECT AND SHOULD NOT BE USED AS A BASIS FOR CONSTRUCTION. HAMMOND LUMBER COMPANY SUGGESTS THAT IT'S CUSTOMERS SEEK THE SERVICES OF A REGISTERED ARCHITECT TO OBTAIN TECHNICAL BLUEPRINTS IF THE CUSTOMER DESIRES TO PROCEED FURTHER. DRAWINGS ARE NOT TO BE USED AS A BASIS FOR CONSTRUCTION AND HAMMOND LUMBER COMPANY DISCLAIMS ANY RESPONSIBILITY IF THEY ARE SO USED.

HOME
PLANNING CENTER

A Division of Hammond Lumber Company

SEND FEEDBACK: EMAIL DRAFTINGFEEDBACK@HAMMONDLUMBER.COM

D2. THIS DRAWING HAS BEEN CREATED FROM INFORMATION GATHERED FROM CLIENT AND/OR BUILDER AND OTHERS INVOLVED. ANY DECISIONS TO DEVIATE FROM THIS AGREED UPON DRAWING COULD CREATE UNDESIRABLE CONSEQUENCES. WALL HEIGHTS, FLOOR AND ROOF SYSTEMS SHOWN ARE DELIBERATE CHOICES MADE BY THE DESIGNER AND AGREED UPON BY THE PERSON IN POSSESSION OF THIS COPY. RIVER COUNTS, FASCIA HEIGHTS AND WINDOW SIZES ARE DETERMINED BASED ON THESE COMPONENTS. CHANGING WALL HEIGHTS OR FLOOR DEPTH (CONVENTIONAL LUMBER VS. OPEN UP FLOOR TRUSSES OR JOISTS) WILL LIKELY CHANGE THE NUMBER OF STAIRS AND TOTAL RUN NEEDED, AFFECTING THE OVERALL DESIGN. CHANGING THE ROOF FRAMING APPROACH (CONVENTIONAL LUMBER VS. TRUSS) COULD AFFECT THE FASCIA HEIGHTS AND THE OVERALL LOOK OF THE HOME AS VIEWED FROM THE EXTERIOR. CHANGING FASCIA HEIGHTS MAY ALSO AFFECT WINDOW SIZING, PLACEMENT, AND EGRESS DESIGNATION WHEREVER THEY NEAR ROOFLINES. IF THE HOMEOWNER, BUILDER AND/OR SALESPERSON MAKE THE DECISION TO DEVIATE FROM THE DESIGN AS SHOWN BY CHANGING ANY OF THESE COMPONENTS, IT IS STRONGLY RECOMMENDED THAT THEY CONTACT THIS DESIGN GROUP TO VERIFY THAT THE DRAWING WILL STILL WORK.



PLANNING CENTER

D1

22 LOCATIONS ACROSS MAINE & NEW HAMPSHIRE

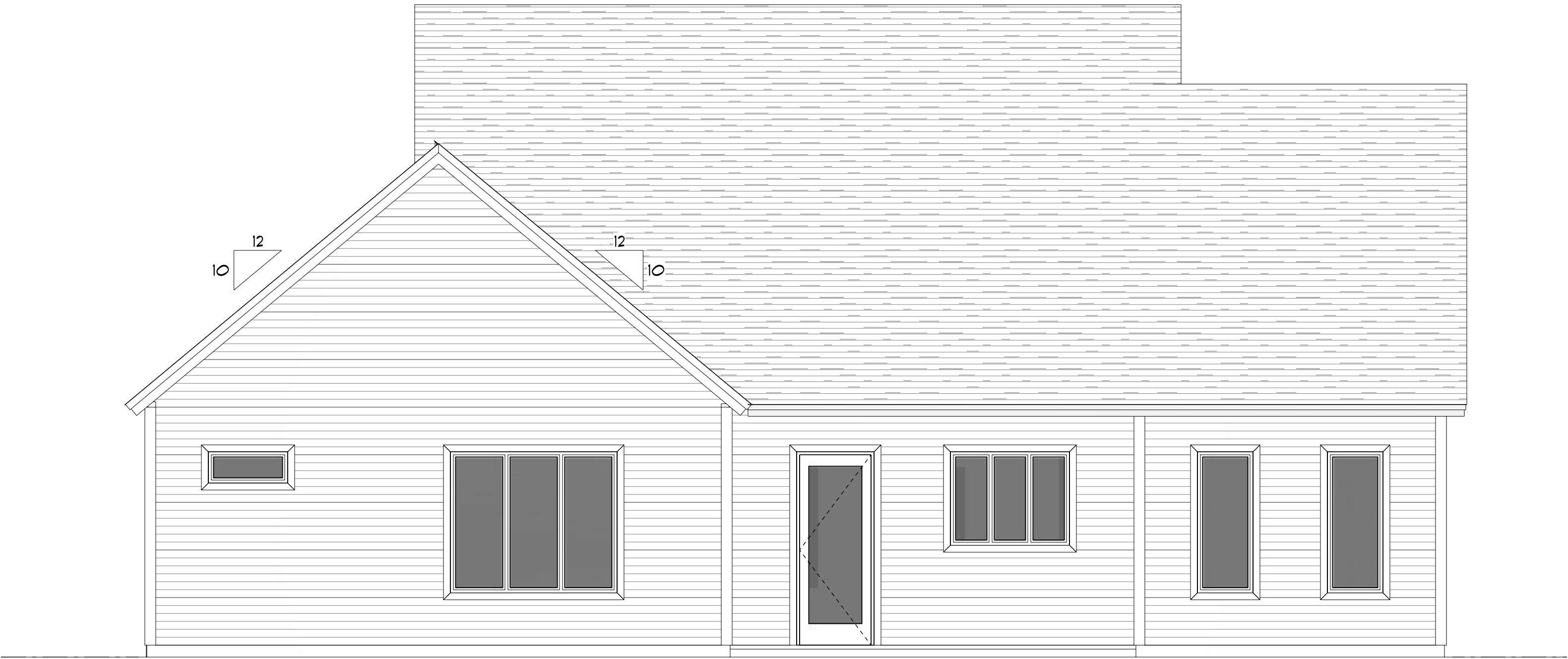
AUBURN • BANCOR • BAR HARBOR • BELFAST • BELGRADE
BLUE HILL • BOOTHBAY HARBOR • BRUNSWICK • BUCKSPORT
CALAIS • CAMDEN • CHERRYFIELD • DAMARISCOTTA • ELLSWORTH
FAIRFIELD • FARMINGTON • GREENVILLE • MACHIAS • PORTLAND
ROCHESTER (NH) • ROCKLAND • SKOWHEGAN

WWW.HAMMONDLUMBER.COM

D). Drawings are provided by HATYONG LINBER COMPANY as a service to its customers and are intended for INFORMATIONAL AND ILLUSTRATIVE PURPOSES ONLY. THE INFORMATION PRESENTED IN THESE DRAWINGS WAS NOT ON REVIEWED BY A REGISTERED ARCHITECT AND SHOULD NOT BE USED AS A BASIS FOR CONSTRUCTION. HATYONG LINBER COMPANY SUGGESTS THAT IF A CUSTOMER WISHES THE SERVICES OF A REGISTERED ARCHITECT TO OBTAIN TECHNICAL BLUEPRINTS IF THE CUSTOMER DESIRES TO PROCEED FURTHER, DRAWINGS ARE NOT TO BE USED AS A BASIS FOR CONSTRUCTION AND HATYONG LINBER COMPANY DISCLAIMS ANY RESPONSIBILITY IF THEY ARE SO USED.

D2

D2. This drawing has been created from information gathered from client and/or builder and others involved. Any decisions to sway from this agreed upon drawing could create undesired consequences. Wall heights, floor and roof systems shown here are deliberate choices made by the designer and agreed upon by the person in possession of this copy. Riser counts, fascia heights and window sizes are determined based on these components. Changing wall heights or floor depth (conventional lumber vs. open web floor trusses or joists) will likely change the number of stairs and total run needed, affecting the overall design. Changing the roof framing approach (conventional lumber vs. truss) could affect the fascia heights and the overall look of the home as viewed from the exterior. Changing fascia heights may also affect window sizing, placement, and egress designation wherever they near rooflines. If the homeowner, builder and/or salesperson make the decision to deviate from the design as shown by changing any of these components, it is strongly recommended that they contact this design group to verify that the drawing will still work.



REAR ELEVATION
SCALE: 1/4" = 1'-0"



LEFT ELEVATION
SCALE: 1/4" = 1'-0"

PRELIMINARY DRAWING - NOT FOR CONSTRUCTION

OLEG OPALNYK

SPEC HOUSE 3 10/4/2024

RANCH

BRUNSWICK

SCALE = AS NOTED

Hammond
Lumber Company

22 LOCATIONS ACROSS MAINE & NEW HAMPSHIRE
AUBURN • BANGOR • BAR HARBOR • BELFAST • BELGRADE
BLUE HILL • BOOTHBAY HARBOR • BRUNSWICK • BUCKSPORT
CALAIS • CAMDEN • CHERRYFIELD • DAMASCUS • ELLSVORTH
FAIRFIELD • FARMINGTON • GREENVILLE • MACHIAS • PORTLAND
ROCHESTER (NH) • ROCKLAND • SKOWHEGAN

WWW.HAMMONDLUMBER.COM

D1. DRAWINGS ARE PROVIDED BY HAMMOND LUMBER COMPANY AS A SERVICE TO IT'S CUSTOMERS AND ARE INTENDED FOR INFORMATIONAL AND ILLUSTRATIVE PURPOSES ONLY. THE INFORMATION PRESENTED IN THESE DRAWINGS WAS NOT OR REVIEWED BY A REGISTERED ARCHITECT AND SHOULD NOT BE USED AS A BASIS FOR CONSTRUCTION. HAMMOND LUMBER COMPANY SUGGESTS THAT IT'S CUSTOMERS SEEK THE SERVICES OF A REGISTERED ARCHITECT TO OBTAIN TECHNICAL BLUEPRINTS IF THE CUSTOMER DESIRES TO PROCEED FURTHER. DRAWINGS ARE NOT TO BE USED AS A BASIS FOR CONSTRUCTION AND HAMMOND LUMBER COMPANY DISCLAIMS ANY RESPONSIBILITY IF THEY ARE SO USED.

D1

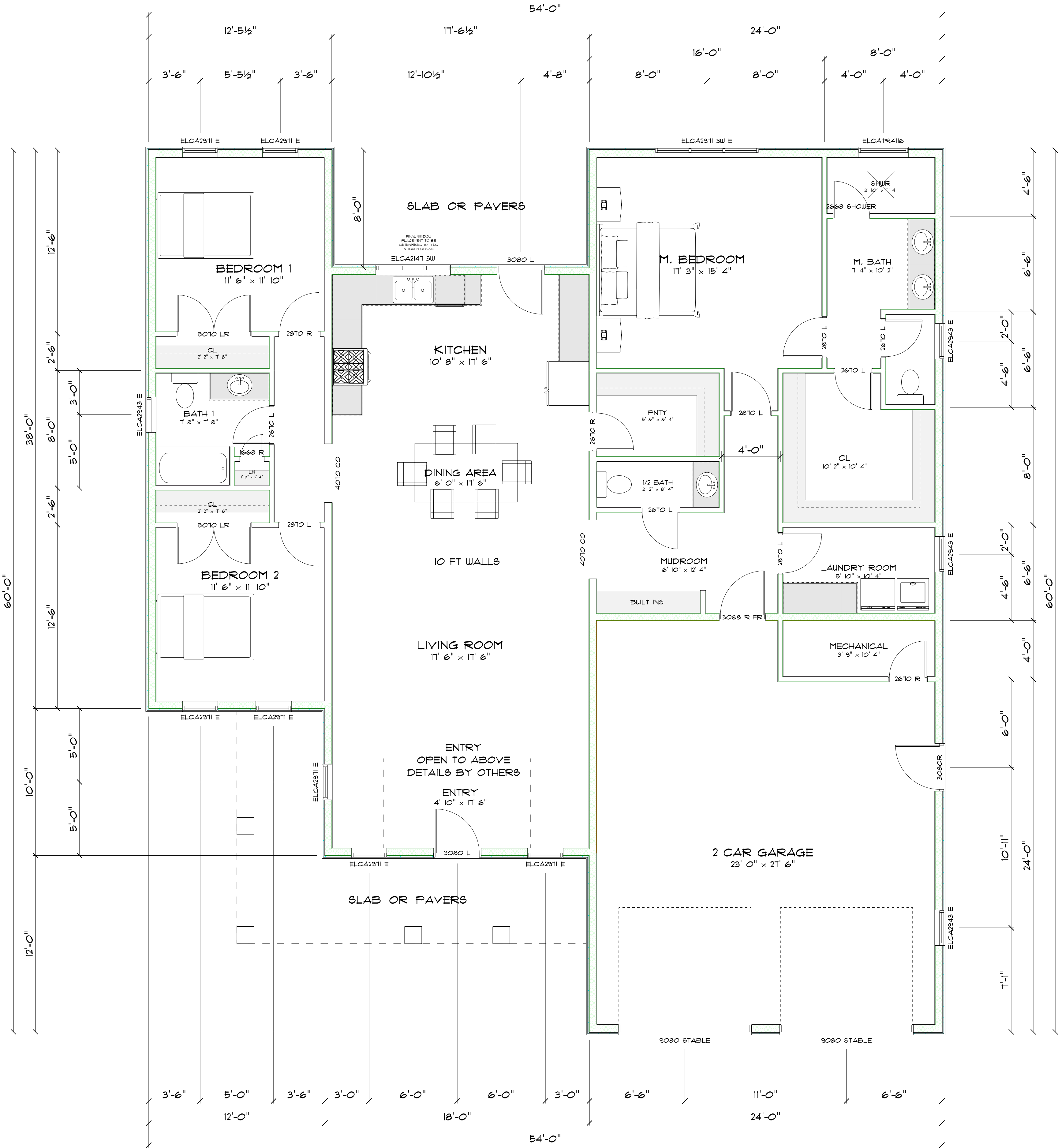
LCR	SCG	BRU
RN241854		
3	6	

Revision & Service		
Rev	Date	Description
Rev1	9/23/24	Initial Design
Rev2	10/4/2024	Revised Design
Rev3		
Rev4		
Rev5		
Rev6		
Rev7		
Rev8		
Rev9		
Rev10		

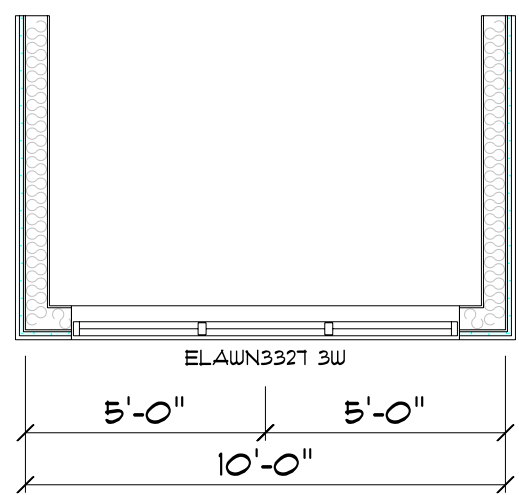
HOME
PLANNING CENTER
A Division of Hammond Lumber Company

D2

D2. This drawing has been created from information gathered from client and/or builder and others involved. Any decisions to sway from this agreed upon drawing could create undesired consequences. Wall heights, floor and roof systems shown here are deliberate choices made by the designer and agreed upon by the person in possession of this copy. Riser counts, fascia heights and window sizes are determined based on these components. Changing wall heights or floor depth (conventional lumber vs. open web floor trusses or joists) will likely change the number of stairs and total run needed, affecting the overall design. Changing the roof framing approach (conventional lumber vs. truss) could affect the fascia heights and the overall look of the home as viewed from the exterior. Changing fascia heights may also affect window sizing, placement, and egress designation wherever they near rooflines. If the homeowner, builder and/or salesperson make the decision to deviate from the design as shown by changing any of these components, it is strongly recommended that they contact this design group to verify that the drawing will still work.



FIRST FLOOR
SCALE: 1/4" = 1'-0"



SECOND FLOOR
SCALE: 1/4" = 1'-0"

PRELIMINARY DRAWING - NOT FOR CONSTRUCTION

OLEG OPALNYK

SPEC HOUSE 3

10/4/2024

RANCH

BRUNSWICK

SCALE = AS NOTED

Hammond
Lumber Company

22 LOCATIONS ACROSS MAINE & NEW HAMPSHIRE
AUBURN • BANGOR • BAR HARBOR • BELFAST • BELGRADE
BLUE HILL • BOOTHBAY HARBOR • BRUNSWICK • BUCKSPORT
CALAIS • CAMDEN • CHERRYFIELD • DAMASCUS • ELLSVORTH
FAIRFIELD • FARMINGTON • GREENVILLE • MACHIAS • PORTLAND
ROCHESTER (NH) • ROCKLAND • SKOWHEGAN

WWW.HAMMONDLUMBER.COM

RN241854

1	2	3	4	5	6	7	8	9	10	11	12	13	14	15	16	17	18	19	20	21	22
---	---	---	---	---	---	---	---	---	----	----	----	----	----	----	----	----	----	----	----	----	----

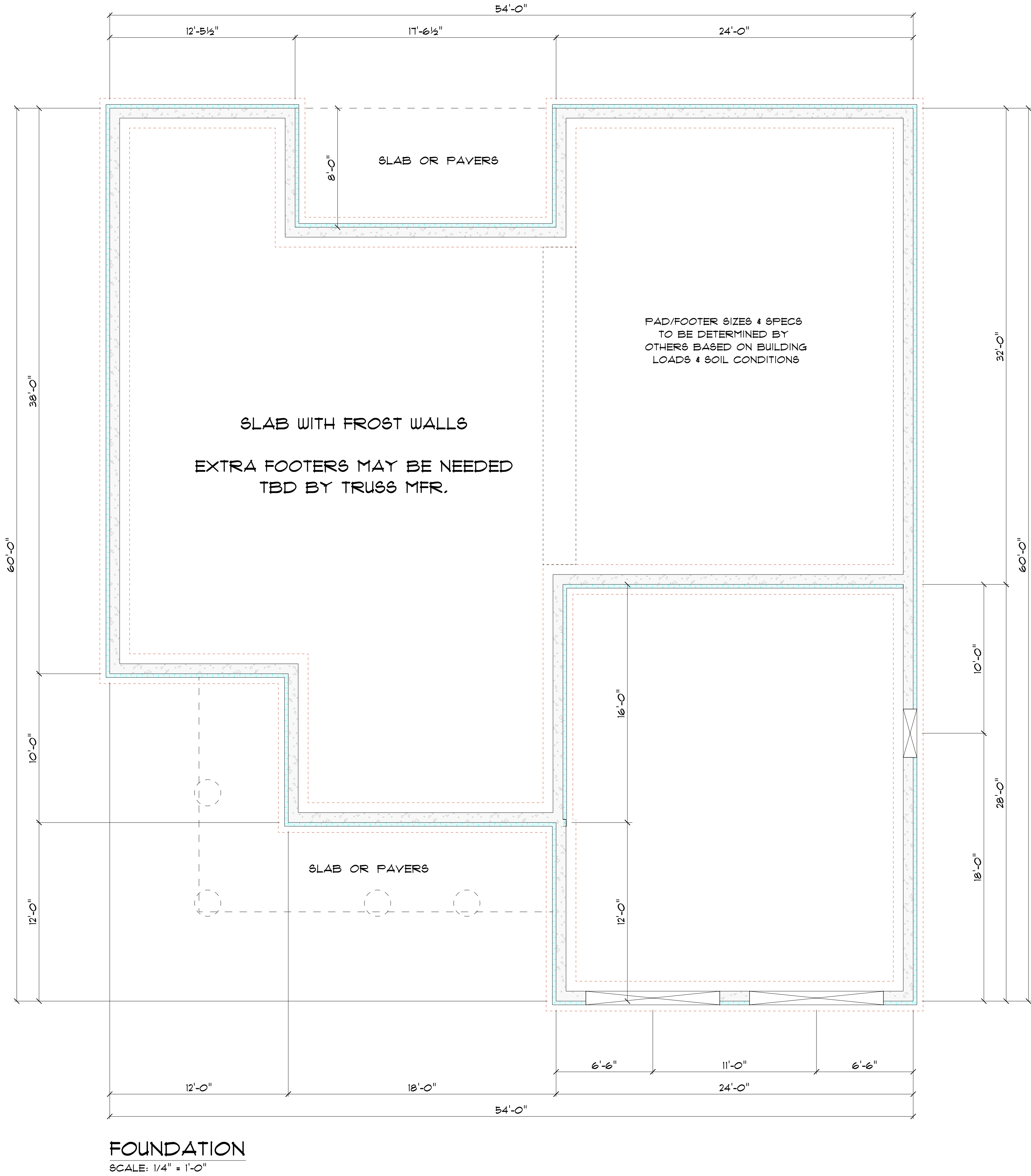
LCR SCG BRU

HOME
PLANNING CENTER

A Division of Hammond Lumber Company

SEND FEEDBACK: EMAIL DRAFTINGFEEDBACK@HAMMONDLUMBER.COM

D2. This drawing has been created from information gathered from client and/or builder and others involved. Any decisions to sway from this agreed upon drawing could create undesired consequences. Wall heights, floor and roof systems shown here are deliberate choices made by the designer and agreed upon by the person in possession of this copy. Riser counts, fascia heights and window sizes are determined based on these components. Changing wall heights or floor depth (conventional lumber vs. open web floor trusses or joists) will likely change the number of stairs and total run needed, affecting the overall design. Changing the roof framing approach (conventional lumber vs. truss) could affect the fascia heights and the overall look of the home as viewed from the exterior. Changing fascia heights may also affect window sizing, placement, and egress designation wherever they near rooflines. If the homeowner, builder and/or salesperson make the decision to deviate from the design as shown by changing any of these components, it is strongly recommended that they contact this design group to verify that the drawing will still work.



PRELIMINARY DRAWING - NOT FOR CONSTRUCTION

HOME
PLANNING CENTER

A Division of Hammond Lumber Company

OLEG OPALNYK	SPEC HOUSE 3		10/4/2024
RANCH	SCALE = AS NOTED		
BRUNSWICK			

LCR	SCG	BRU
RN241854		
5	6	

Hammond

Lumber Company

22 LOCATIONS ACROSS MAINE & NEW HAMPSHIRE

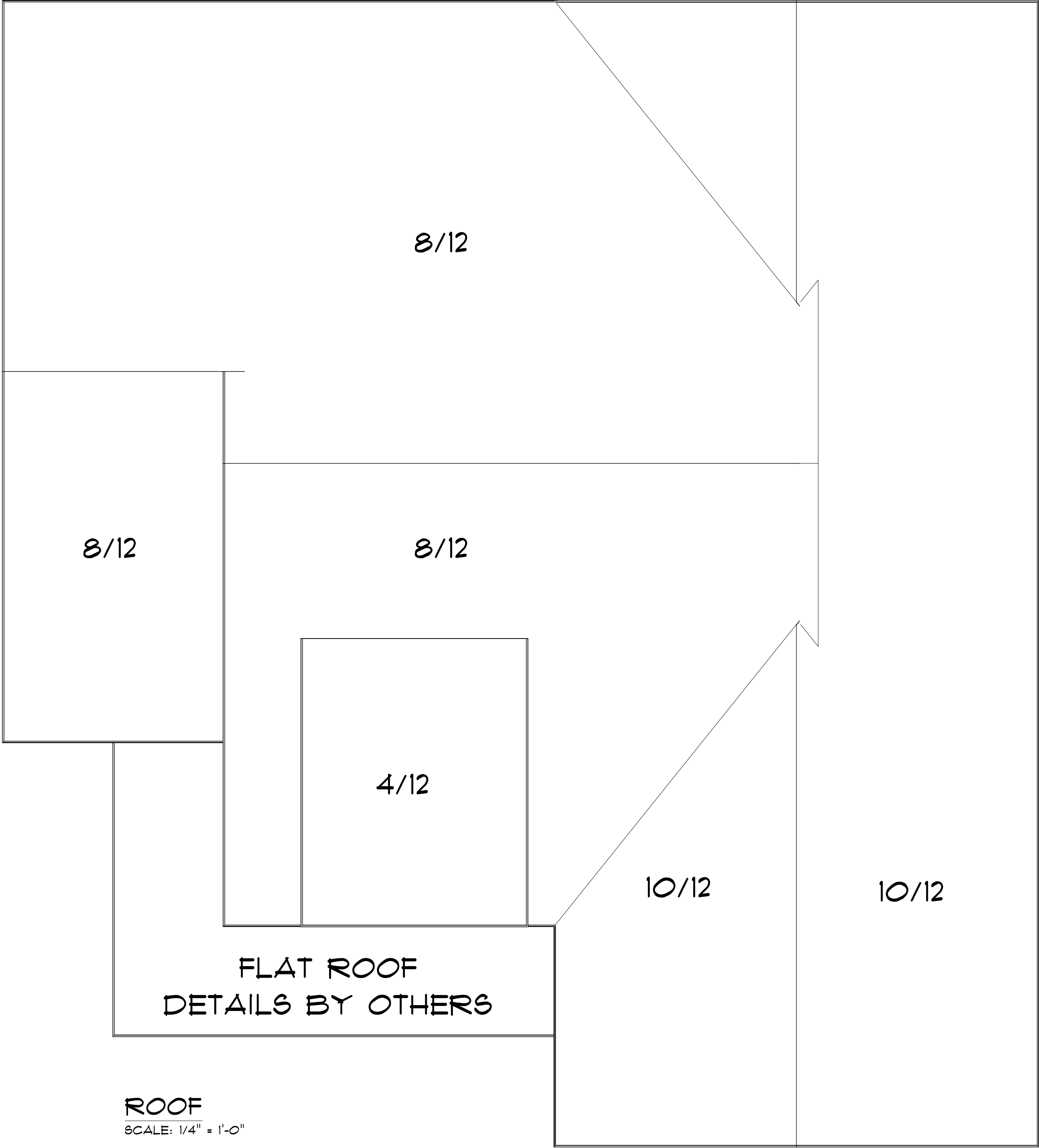
AUBURN • BANGOR • BAR HARBOR • BELFAST • BELGRADE
BLUE HILL • BOOTHBAY HARBOR • BRUNSWICK • BUCKSPORT
CALAIS • CAMDEN • CHERRYFIELD • DAMARISCOTTA • ELLSVORTH
FAIRFIELD • FARMINGTON • GREENVILLE • MACHIAS • PORTLAND
ROCHESTER (NH) • ROCKLAND • SKOWHEGAN

WWW.HAMMONDLUMBER.COM

D1. DRAWINGS ARE PROVIDED BY HAMMOND LUMBER COMPANY AS A SERVICE TO IT'S CUSTOMERS AND ARE INTENDED FOR INFORMATIONAL AND ILLUSTRATIVE PURPOSES ONLY. THE INFORMATION PRESENTED IN THESE DRAWINGS WAS NOT OR REVIEWED BY A REGISTERED ARCHITECT AND SHOULD NOT BE USED AS A BASIS FOR CONSTRUCTION. HAMMOND LUMBER COMPANY SUGGESTS THAT IT'S CUSTOMERS SEEK THE SERVICES OF A REGISTERED ARCHITECT TO OBTAIN TECHNICAL BLUEPRINTS IF THE CUSTOMER DESIRES TO PROCEED FURTHER. DRAWINGS ARE NOT TO BE USED AS A BASIS FOR CONSTRUCTION AND HAMMOND LUMBER COMPANY DISCLAIMS ANY RESPONSIBILITY IF THEY ARE SO USED.

D2

D2. This drawing has been created from information gathered from client and/or builder and others involved. Any decisions to sway from this agreed upon drawing could create undesired consequences. Wall heights, floor and roof systems shown here are deliberate choices made by the designer and agreed upon by the person in possession of this copy. Riser counts, fascia heights and window sizes are determined based on these components. Changing wall heights or floor depth (conventional lumber vs. open web floor trusses or joists) will likely change the number of stairs and total run needed, affecting the overall design. Changing the roof framing approach (conventional lumber vs. truss) could affect the fascia heights and the overall look of the home as viewed from the exterior. Changing fascia heights may also affect window sizing, placement, and egress designation wherever they near rooflines. If the homeowner, builder and/or salesperson make the decision to deviate from the design as shown by changing any of these components, it is strongly recommended that they contact this design group to verify that the drawing will still work.



PRELIMINARY DRAWING - NOT FOR CONSTRUCTION



HOME
PLANNING CENTER

A Division of Hammond Lumber Company

OLEG OPALNYK

SPEC HOUSE 3	10/4/2024
RANCH	
BRUNSWICK	SCALE = AS NOTED

LCR

SCG

BRU

RN241854	6	6
----------	---	---

Hammond
Lumber Company

22 LOCATIONS ACROSS MAINE & NEW HAMPSHIRE

AUBURN • BANGOR • BAR HARBOR • BELFAST • BELGRADE
BLUE HILL • BOOTHBAY HARBOR • BRUNSWICK • BUCKSPORT
CALAIS • CAMDEN • CHERRYFIELD • DAMASCUS • ELLSWORTH
FAIRFIELD • FARMINGTON • GREENVILLE • MACHIAS • PORTLAND
ROCHESTER (NH) • ROCKLAND • SKOWHEGAN

WWW.HAMMONDLUMBER.COM

D1. DRAWINGS ARE PROVIDED BY HAMMOND LUMBER COMPANY AS A SERVICE TO IT'S CUSTOMERS AND ARE INTENDED FOR INFORMATIONAL AND ILLUSTRATIVE PURPOSES ONLY. THE INFORMATION PRESENTED IN THESE DRAWINGS WAS NOT OR REVIEWED BY A REGISTERED ARCHITECT AND SHOULD NOT BE USED AS A BASIS FOR CONSTRUCTION. HAMMOND LUMBER COMPANY SUGGESTS THAT IT'S CUSTOMERS SEEK THE SERVICES OF A REGISTERED ARCHITECT TO OBTAIN TECHNICAL BLUEPRINTS IF THE CUSTOMER DESIRES TO PROCEED FURTHER. DRAWINGS ARE NOT TO BE USED AS A BASIS FOR CONSTRUCTION AND HAMMOND LUMBER COMPANY DISCLAIMS ANY RESPONSIBILITY IF THEY ARE SO USED.

D1