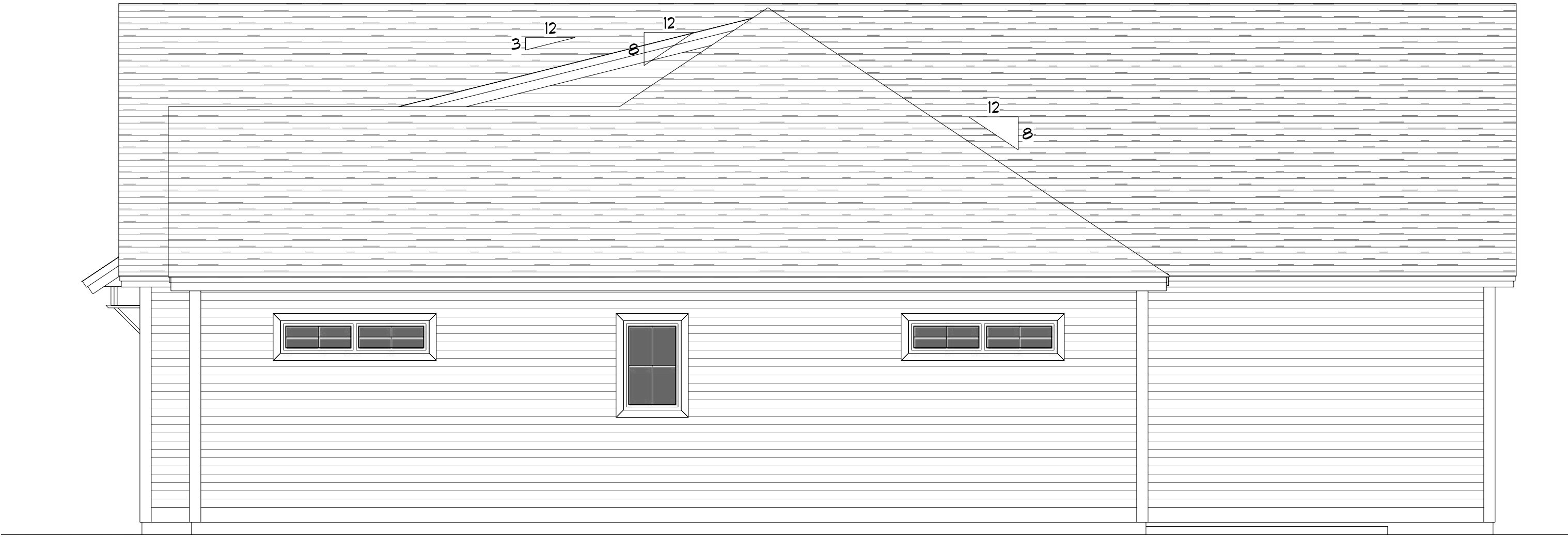


D2

D2. This drawing has been created from information gathered from client and/or builder and others involved. Any decisions to sway from this agreed upon drawing could create undesired consequences. Wall heights, floor and roof systems shown here are deliberate choices made by the designer and agreed upon by the person in possession of this copy. Riser counts, fascia heights and window sizes are determined based on these components. Changing wall heights or floor depth (conventional lumber vs. open web floor trusses or joists) will likely change the number of stairs and total run needed, affecting the overall design. Changing the roof framing approach (conventional lumber vs. truss) could affect the fascia heights and the overall look of the home as viewed from the exterior. Changing fascia heights may also affect window sizing, placement, and egress designation wherever they near rooflines. If the homeowner, builder and/or salesperson make the decision to deviate from the design as shown by changing any of these components, it is strongly recommended that they contact this design group to verify that the drawing will still work.



FRONT ELEVATION
SCALE: 1/4" = 1'-0"



RIGHT ELEVATION
SCALE: 1/4" = 1'-0"

PRELIMINARY DRAWING - NOT FOR CONSTRUCTION

OLEG OPALNYK

SPEC HOUSE 5

10/4/2024

RANCH

BRUNSWICK

SCALE = AS NOTED

Hammond
Lumber Company

22 LOCATIONS ACROSS MAINE & NEW HAMPSHIRE
AUBURN • BANGOR • BAR HARBOR • BELFAST • BELGRADE
BLUE HILL • BOOTHBAY HARBOR • BRUNSWICK • BUCKSPORT
CALAIS • CAMDEN • CHERRYFIELD • DAMASCUS • ELLSVORTH
FAIRFIELD • FARMINGTON • GREENVILLE • MACHIAS • PORTLAND
ROCHESTER (NH) • ROCKLAND • SKOWHEGAN

WWW.HAMMONDLUMBER.COM

D1. DRAWINGS ARE PROVIDED BY HAMMOND LUMBER COMPANY AS A SERVICE TO IT'S CUSTOMERS AND ARE INTENDED FOR INFORMATIONAL AND ILLUSTRATIVE PURPOSES ONLY. THE INFORMATION PRESENTED IN THESE DRAWINGS WAS NOT OR REVIEWED BY A REGISTERED ARCHITECT AND SHOULD NOT BE USED AS A BASIS FOR CONSTRUCTION. HAMMOND LUMBER COMPANY SUGGESTS THAT IT'S CUSTOMERS SEEK THE SERVICES OF A REGISTERED ARCHITECT TO OBTAIN TECHNICAL BLUEPRINTS IF THE CUSTOMER DESIRES TO PROCEED FURTHER. DRAWINGS ARE NOT TO BE USED AS A BASIS FOR CONSTRUCTION AND HAMMOND LUMBER COMPANY DISCLAIMS ANY RESPONSIBILITY IF THEY ARE SO USED.

LCR SCG BRU

RN241851
2 6



HOME
PLANNING CENTER

A Division of Hammond Lumber Company

D2. This drawing has been created from information gathered from client and/or builder and others involved. Any decisions to sway from this agreed upon drawing could create undesired consequences. Wall heights, floor and roof systems shown here are deliberate choices made by the designer and agreed upon by the person in possession of this copy. Riser counts, fascia heights and window sizes are determined based on these components. Changing wall heights or floor depth (conventional lumber vs. open web floor trusses or joists) will likely change the number of stairs and total run needed, affecting the overall design. Changing the roof framing approach (conventional lumber vs. truss) could affect the fascia heights and the overall look of the home as viewed from the exterior. Changing fascia heights may also affect window sizing, placement, and egress designation wherever they near rooflines. If the homeowner, builder and/or salesperson make the decision to deviate from the design as shown by changing any of these components, it is strongly recommended that they contact this design group to verify that the drawing will still work.



LEFT ELEVATION
SCALE: 1/4" = 1'-0"



REAR ELEVATION
SCALE: 1/4" = 1'-0"

PRELIMINARY DRAWING - NOT FOR CONSTRUCTION

OLEG OPALNYK

SPEC HOUSE 5 10/4/2024

RANCH

BRUNSWICK

SCALE = AS NOTED

Hammond
Lumber Company

22 LOCATIONS ACROSS MAINE & NEW HAMPSHIRE
AUBURN • BANGOR • BAR HARBOR • BELFAST • BELGRADE
BLUE HILL • BOOTHBAY HARBOR • BRUNSWICK • BUCKSPORT
CALAIS • CAMDEN • CHERRYFIELD • DAMASCUS • ELLSVORTH
FAIRFIELD • FARMINGTON • GREENVILLE • MACHIAS • PORTLAND
ROCHESTER (NH) • ROCKLAND • SKOWHEGAN

WWW.HAMMONDLUMBER.COM

D1. DRAWINGS ARE PROVIDED BY HAMMOND LUMBER COMPANY AS A SERVICE TO IT'S CUSTOMERS AND ARE INTENDED FOR INFORMATIONAL AND ILLUSTRATIVE PURPOSES ONLY. THE INFORMATION PRESENTED IN THESE DRAWINGS WAS NOT OR REVIEWED BY A REGISTERED ARCHITECT AND SHOULD NOT BE USED AS A BASIS FOR CONSTRUCTION. HAMMOND LUMBER COMPANY SUGGESTS THAT IT'S CUSTOMERS SEEK THE SERVICES OF A REGISTERED ARCHITECT TO OBTAIN TECHNICAL BLUEPRINTS IF THE CUSTOMER DESIRES TO PROCEED FURTHER. DRAWINGS ARE NOT TO BE USED AS A BASIS FOR CONSTRUCTION AND HAMMOND LUMBER COMPANY DISCLAIMS ANY RESPONSIBILITY IF THEY ARE SO USED.

D1

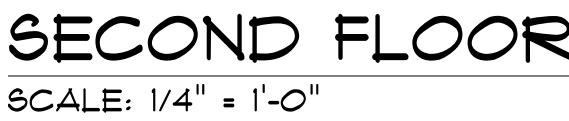
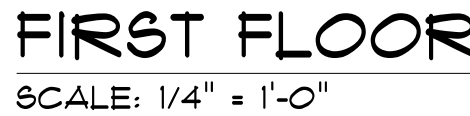
LCR	SCG	BRU
RN241851		
3	6	

Revised	9/30/24
Revised	10/1/24
Revised	10/2/24
Revised	10/3/24
Revised	10/4/24

HOME
PLANNING CENTER
A Division of Hammond Lumber Company

SEND FEEDBACK: EMAIL DRAFTINGFEEDBACK@HAMMONDLUMBER.COM

D2. THIS DRAWING HAS BEEN CREATED FROM INFORMATION GATHERED FROM CLIENT AND/OR BUILDER AND OTHERS INVOLVED. ANY DECISIONS TO SWAY FROM THIS AGREED UPON DRAWING COULD CREATE UNDESIRABLE CONSEQUENCES. WALL HEIGHTS, FLOOR AND ROOF SYSTEMS SHOWN ARE DELIBERATE CHOICES MADE BY THE DESIGNER AND AGREED UPON BY THE PERSON IN POSSESSION OF THIS COPY. RISER COUNTS, FASCIA HEIGHTS AND WINDOW SIZES ARE DETERMINED BASED ON THESE COMPONENTS. CHANGING WALL HEIGHTS OR FLOOR DEPTH (CONVENTIONAL LUMBER VS. OPEN WEB FLOOR TRUSSES OR I-JOISTS) WILL LIKELY CHANGE THE NUMBER OF STAIRS AND TOTAL RUN NEEDED, AFFECTING THE OVERALL DESIGN. CHANGING THE ROOF FRAMING APPROACH (CONVENTIONAL LUMBER VS. TRUSS) COULD AFFECT THE FASCIA HEIGHTS AND THE OVERALL LOOK OF THE HOME AS VIEWED FROM THE EXTERIOR. CHANGING FASCIA HEIGHTS MAY ALSO AFFECT WINDOW SIZING, PLACEMENT, AND EGRESS DESIGNATION WHEREVER THEY NEAR ROOFLINES. IF THE HOMEOWNER, BUILDER AND/OR SALESPERSON MAKE THE DECISION TO DEViate FROM THE DESIGN AS SHOWN BY CHANGING ANY OF THESE COMPONENTS, IT IS STRONGLY RECOMMENDED THAT THEY CONTACT THIS DESIGN GROUP TO VERIFY THAT THE DRAWING WILL STILL WORK.



**HOME
PLANNING CENTER**
A Division of Hammond Lumber Company

A Division of Hammond Lumber Company

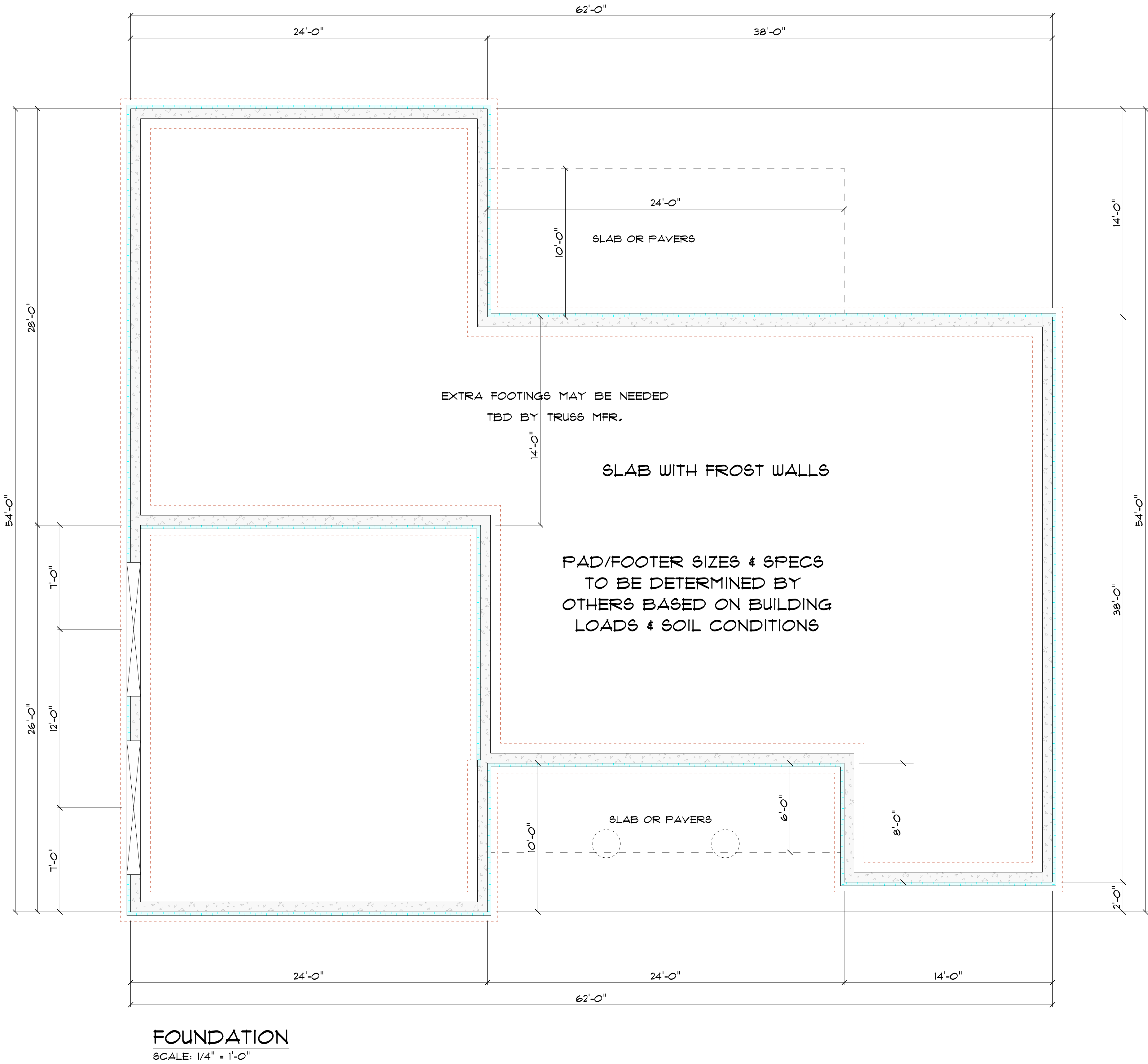
A Division of Hammond Lumber Company

D1

WWW.HAMMONDLUMBER.COM

IMPORTANT NOTICE: THE INFORMATION PRESENTED IN THESE DRAWINGS WAS NOT ON REVIEW BY A REGISTERED ARCHITECT AND SHOULD BE USED ONLY FOR ILLUSTRATIVE PURPOSES ONLY. HATHAWAY LUMBER COMPANY SUGGESTS THAT IF A CUSTOMER DESIRES THE SERVICES OF A REGISTERED ARCHITECT TO OBTAIN TECHNICAL BLUEPRINTS IF THE CUSTOMER DESIRES TO PROCEED FURTHER, DRAWINGS ARE NOT TO BE USED AS A BASIS FOR CONSTRUCTION AND HATHAWAY LUMBER COMPANY DISCLAIMS ANY RESPONSIBILITY IF THEY ARE SO USED.

D2. This drawing has been created from information gathered from client and/or builder and others involved. Any decisions to sway from this agreed upon drawing could create undesired consequences. Wall heights, floor and roof systems shown here are deliberate choices made by the designer and agreed upon by the person in possession of this copy. Riser counts, fascia heights and window sizes are determined based on these components. Changing wall heights or floor depth (conventional lumber vs. open web floor trusses or joists) will likely change the number of stairs and total run needed, affecting the overall design. Changing the roof framing approach (conventional lumber vs. truss) could affect the fascia heights and the overall look of the home as viewed from the exterior. Changing fascia heights may also affect window sizing, placement, and egress designation wherever they near rooflines. If the homeowner, builder and/or salesperson make the decision to deviate from the design as shown by changing any of these components, it is strongly recommended that they contact this design group to verify that the drawing will still work.



PRELIMINARY DRAWING - NOT FOR CONSTRUCTION

D2

D2. This drawing has been created from information gathered from client and/or builder and others involved. Any decisions to sway from this agreed upon drawing could create undesired consequences. Wall heights, floor and roof systems shown here are deliberate choices made by the designer and agreed upon by the person in possession of this copy. Riser counts, fascia heights and window sizes are determined based on these components. Changing wall heights or floor depth (conventional lumber vs. open web floor trusses or joists) will likely change the number of stairs and total run needed, affecting the overall design. Changing the roof framing approach (conventional lumber vs. truss) could affect the fascia heights and the overall look of the home as viewed from the exterior. Changing fascia heights may also affect window sizing, placement, and egress designation wherever they near rooflines. If the homeowner, builder and/or salesperson make the decision to deviate from the design as shown by changing any of these components, it is strongly recommended that they contact this design group to verify that the drawing will still work.



ROOF
SCALE: 1/4" = 1'-0"

PRELIMINARY DRAWING - NOT FOR CONSTRUCTION



OLEG OPALNYK	SPEC HOUSE 5		10/4/2024
RANCH	SCALE = AS NOTED		
BRUNSWICK			

LCR	SCG	BRU
RN241851		
6	6	6



22 LOCATIONS ACROSS MAINE & NEW HAMPSHIRE
AUBURN • BANGOR • BAR HARBOR • BELFAST • BELGRADE
BLUE HILL • BOOTHBAY HARBOR • BRUNSWICK • BUCKSPORT
CALAIS • CAMDEN • CHERRYFIELD • DAMASCUS • ELLSVORTH
FAIRFIELD • FARMINGTON • GREENVILLE • MACHIAS • PORTLAND
ROCHESTER (NH) • ROCKLAND • SKOWHEGAN

WWW.HAMMONDLUMBER.COM

D1

D1. DRAWINGS ARE PROVIDED BY HAMMOND LUMBER COMPANY AS A SERVICE TO IT'S CUSTOMERS AND ARE INTENDED FOR INFORMATIONAL AND ILLUSTRATIVE PURPOSES ONLY. THE INFORMATION PRESENTED IN THESE DRAWINGS WAS NOT OR REVIEWED BY A REGISTERED ARCHITECT AND SHOULD NOT BE USED AS A BASIS FOR CONSTRUCTION. HAMMOND LUMBER COMPANY SUGGESTS THAT IT'S CUSTOMERS SEEK THE SERVICES OF A REGISTERED ARCHITECT TO OBTAIN TECHNICAL BLUEPRINTS IF THE CUSTOMER DESIRES TO PROCEED FURTHER. DRAWINGS ARE NOT TO BE USED AS A BASIS FOR CONSTRUCTION AND HAMMOND LUMBER COMPANY DISCLAIMS ANY RESPONSIBILITY IF THEY ARE SO USED.